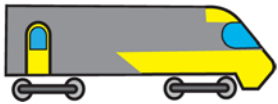


Attenborough Centre: Access Guide

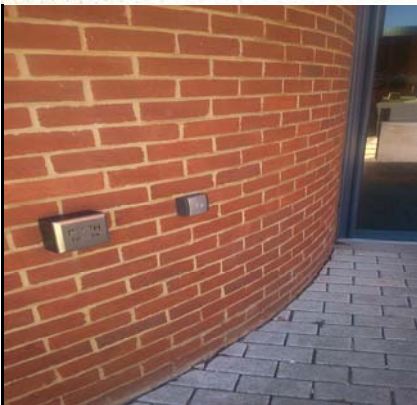
	<p>We want everyone to be welcome and to enjoy themselves at the Attenborough Centre.</p>
	<p>You can book tickets on our website. Use this link www.attenboroughcentre.com</p>
	<p>You can also book tickets over the phone. Call us on 01273 67 88 22.</p>
	<p>You can get a free ticket for a personal assistant if you need one.</p>
	<p>If you use a wheelchair, you can book a space that is easy to get to.</p>
	<p>If you can't use stairs, you can book a seat that you can get to without going up or down stairs.</p>

	<h1>Getting to the venue</h1>
	<h2>Parking</h2> <p>The nearest car park is the Sports Centre car park. It is about 100 metres from the venue.</p>
	<p>There are 2 disabled parking spaces in this car park.</p>
	<p>There is 1 disabled parking space across the road from the venue.</p>
	<h2>Trains</h2> <p>Falmer train station is the closest train station to the venue.</p>
	<p>It is easy to get to Falmer on the train from Brighton and from Lewes.</p>
	<p>When you get off the train follow the path that goes under the road.</p>
	<h2>Buses</h2> <p>Bus number 25 and bus number 25X go from Brighton. They stop close to the venue.</p>
	<p>The closest bus stop is the Sports Centre and Attenborough Centre bus stop. You can see the venue from the bus stop.</p>

Inside the venue



This is the outside of the Attenborough Centre



You can open the front door using the push pad.



When you go in the box office is on your left. The box office has a lowered counter and a hearing loop.



There will be a steward sitting at the desk in the box office. There may be other stewards in the foyer.



Stewards wear black t shirts with the ACCA logo on the front. Ask them if you need anything, they will be happy to help you.



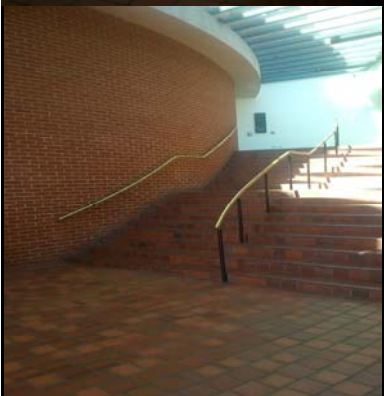
The toilets are on the ground floor. There are 2 accessible toilets.



There is a café where you can buy food and drink.



To get to the theatre go through these doors and up the stairs.



Sometimes you can go up these stairs as well. Stewards can help to show you the way to go.



You can use the lift to get to the café and the theatre.

During the Performance



If you find it difficult to hear, you can use the hearing loop. This makes the sound louder and clearer, and you listen through headphones.



For some shows there are captions that show the words the people on stage are saying. You can ask to have a seat near the captions where you can see them best.



For some shows we have someone signing the words in British Sign Language. You can ask for a seat near them if you need to see the sign language.



If there are flashing lights in the show, we will put up signs to let people know.



You can bring an assistance dog to the venue. Our staff can look after the dog during the show.



Some shows will have loud noises. You can get earplugs at the box office.



You can bring medicine that you need with you to the show. Please let the staff know if you do this.

Contact us



Please get in touch if you have any questions.
You can:



Call us:
01273 67 88 22



Email us:
boxoffice@attenboroughcentre.com



Send us a letter:
Attenborough Centre for the Creative Arts
University of Sussex
BN1 9RA